

# KIT 24x60 OPEN

## € 192,250.00

NO. OF CONTAINERS: 7

DELIVERY TIME: 4 WEEKS FROM EXW ORDER

VALIDITY PRICES FROM 01-2021 TO 12-2023

KIT.24x60 OPEN is a shelter open on the sides, consisting of hot-dip galvanized steelwork and a double-pitched roof in sandwich panels supported by web trusses.

### COLOURS



RAL8017

RAL3009

RAL6005

RAL5010

RAL9006

RAL9002

### DESCRIPTION

**Load-bearing structure**

Pre-designed, welded, bolted structural steelwork, protected with hot-dip galvanization. Material S235JR - S275JR - S355JR ISO 10025-1/2. Grade 8.8 bolting material

**Roof panels**

Roof in sandwich panels consisting of two galvanised sheet layers filled with an inner core of polyurethane foam (PUR).

**Gutters**

Gutters in galvanized, pre-painted, shaped metal sheets.

**Down pipes**

Down pipes in galvanized, pre-painted, shaped metal sheets, including running outlets, collars and accessories.

**Metal sheets**

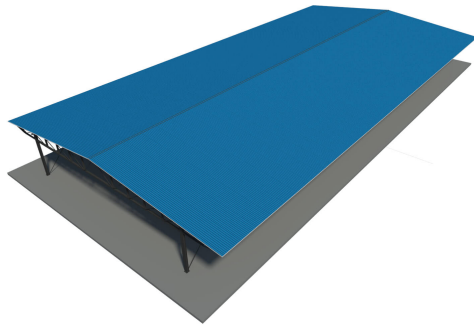
Galvanized, pre-painted, shaped metal sheets for ridges, corner joints, flashings and eaves and any other necessary element.

### TECHNICAL SPECIFICATIONS

Dimensions	24.00x60.00 m
Total m2	1440.00
Usable height	5.00 m
Column distance	6.00 m
Wind	25 m/s
Earthquake-resistant	YES
Roof load	140 kg/m <sup>2</sup>
Roof	Panel thickness 30+40 mm
Roof thermal transmittance	(U) W/m <sup>2</sup> K = 0.43

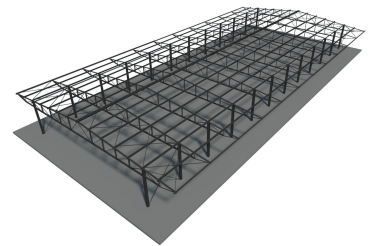
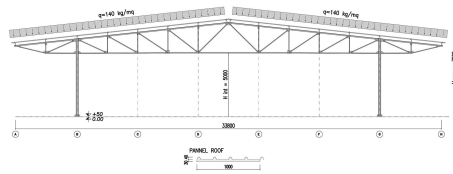
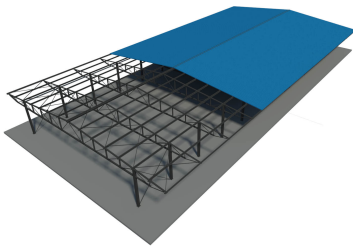
### DOCUMENTS SUPPLIED

- Architectural drawings
- Engineering calculation and analysis report
- Installation Manual
- Technical data sheet, manuals and declaration of conformity
- Structural drawings of steelworks to hand over to relevant authorities
- BOMs
- Certificates of structural materials
- Certificates of origin (if required)



# KIT 24x60 OPEN

ADDITIONAL OPTIONAL CARD



## OPTIONAL PRODUCTS

- Skylights
- Lifelines
- Cage ladder for access to the roof

## OPTIONAL SERVICES

### Transport in Italy and all over the world

KIT.SOLUTIONS products are delivered Ex-Works, loaded on containers or trucks. Transport can be included in the supply, with all necessary shipping documents.

### Installation by skilled staff

KIT.SOLUTIONS products have been designed to be self-installed by skilled technical staff using appropriate installation equipment. Should this not be case, our installation team will be available for a quick, safe, turnkey solution.

### Technical supervision during installation

DIY installation can be complemented with technical supervision of all installation phases.

### Foundation design

Foundation design and plans can be included in your order on request (only drawings showing template positions and stresses are included in the basic supply). Two standard foundation designs are available to this purpose. Should these loads differ from your expectations, a new, customized design can be requested.