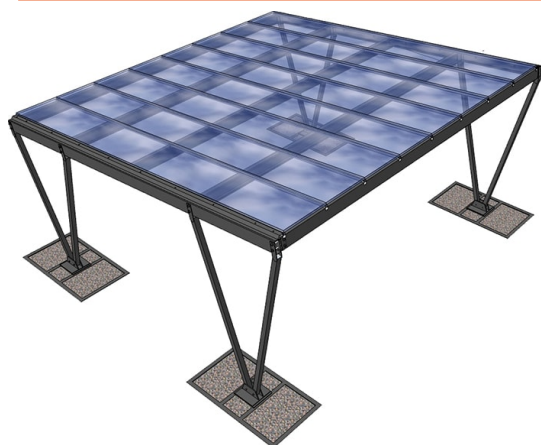




KIT.SOLUTIONS

www.kit.solutions



# CARPORT CUSTOM

COLIBRI - Sandwich panels

Welded and bolted structural steelwork protected with hot-dip galvanization, with "V" shaped support columns complete of base plate and accessories.  
Material S235JR-S275JR-S355JR UNI EN 10025-1/2, grade 8.8 bolting material.

DELIVERY TIME: 3 WEEKS FROM EXW ORDER

VALIDITY PRICES FROM 04-2023 TO 12-2023



€ 3,550.00 VAT EXCLUDED

## TECHNICAL SPECIFICATIONS

Dimensions	5,00x5,00 m
Square Meters	25 m <sup>2</sup>
Useful height	2,00 m
Step columns	5,00 m
Wind	25 m/s
Antiseismic	YES
Covering	Sandwich panels

### Metal Working

Galvanized, pre-painted, shaped metal sheets for ridges, corner joints, flashings and eaves and any other necessary element.

### Painting

Hot-dip galvanized coating UNI EN ISO 1461:2009 finished with powder coating.

### Covering

Cellular polycarbonate panel with UV protection

## OPTIONAL PRODUCTS

### EV CHARGING STATION

EV charging station with no. 2 socket outlet, floor standing, connected to the user's distribution network (optimizable with PV), complete with access badge reader, power 7kW, 32 A.

### "WIRE" SIDE CLADDING

Vegetation support made of steel cables complete with turnbuckles and stainless steel accessories.

### "ECO-BRISE" SIDE CLADDING

Cladding made of wood-plastic composite slats.

### "WIRE" BACK SIDE CLADDING

Vegetation support made of steel cables complete with turnbuckles and stainless steel accessories.

### "ECO-BRISE" BACK SIDE CLADDING

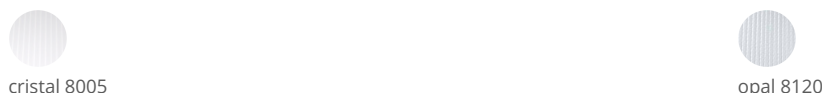
Cladding made of wood-plastic composite slats.

## COLOR STRUCTURE



Other colors depending on availability. The colours here shown are purely indicative and may result different in reality.

## COLOR COVERING



Other colors depending on availability. The colours here shown are purely indicative and may result different in reality.