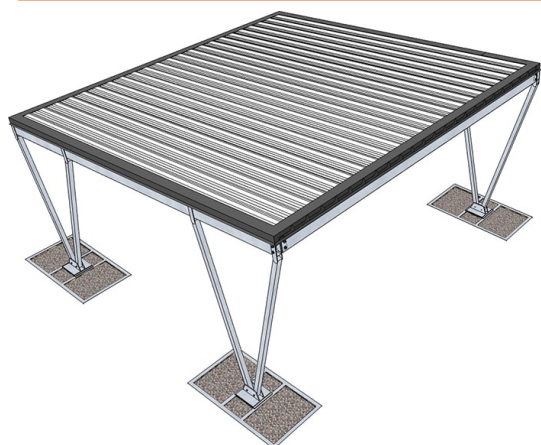




KIT.SOLUTIONS

www.kit.solutions



CARPORT CUSTOM

COLIBRI - Sandwich panels

Welded and bolted structural steelwork protected with hot-dip galvanization, with "V" shaped support columns complete of base plate and accessories.
Material S235JR-S275JR-S355JR UNI EN 10025-1/2, grade 8.8 bolting material.

DELIVERY TIME: 3 WEEKS FROM EXW ORDER

VALIDITY PRICES FROM 04-2023 TO 12-2023



€ 2,600.00 VAT EXCLUDED

TECHNICAL SPECIFICATIONS

Dimensions	5,00x5,00 m
Square Meters	25 m ²
Useful height	2,00 m
Step columns	5,00 m
Wind	25 m/s
Antiseismic	YES
Covering	Sandwich panels

Metal Working

Galvanized, pre-painted, shaped metal sheets for ridges, corner joints, flashings and eaves and any other necessary element.

Painting

Hot-dip galvanized coating UNI EN ISO 1461:2009.

Covering

Roof in sandwich panels consisting of two galvanised sheet layers filled with an inner core of polyurethane foam (PUR).

OPTIONAL PRODUCTS

EV CHARGING STATION

EV charging station with no. 2 socket outlet, floor standing, connected to the user's distribution network (optimizable with PV), complete with access badge reader, power 7kW, 32 A.

"WIRE" SIDE CLADDING

Vegetation support made of steel cables complete with turnbuckles and stainless steel accessories.

"ECO-BRISE" SIDE CLADDING

Cladding made of wood-plastic composite slats.

"WIRE" BACK SIDE CLADDING

Vegetation support made of steel cables complete with turnbuckles and stainless steel accessories.

"ECO-BRISE" BACK SIDE CLADDING

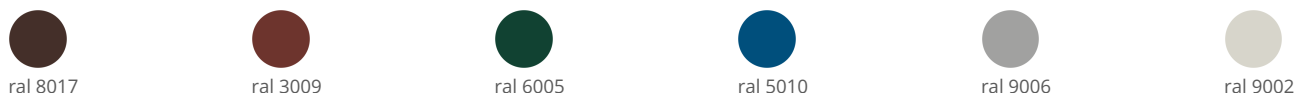
Cladding made of wood-plastic composite slats.

COLOR STRUCTURE

galvanization

Other colors depending on availability. The colours here shown are purely indicative and may result different in reality.

COLOR COVERING



Other colors depending on availability. The colours here shown are purely indicative and may result different in reality.